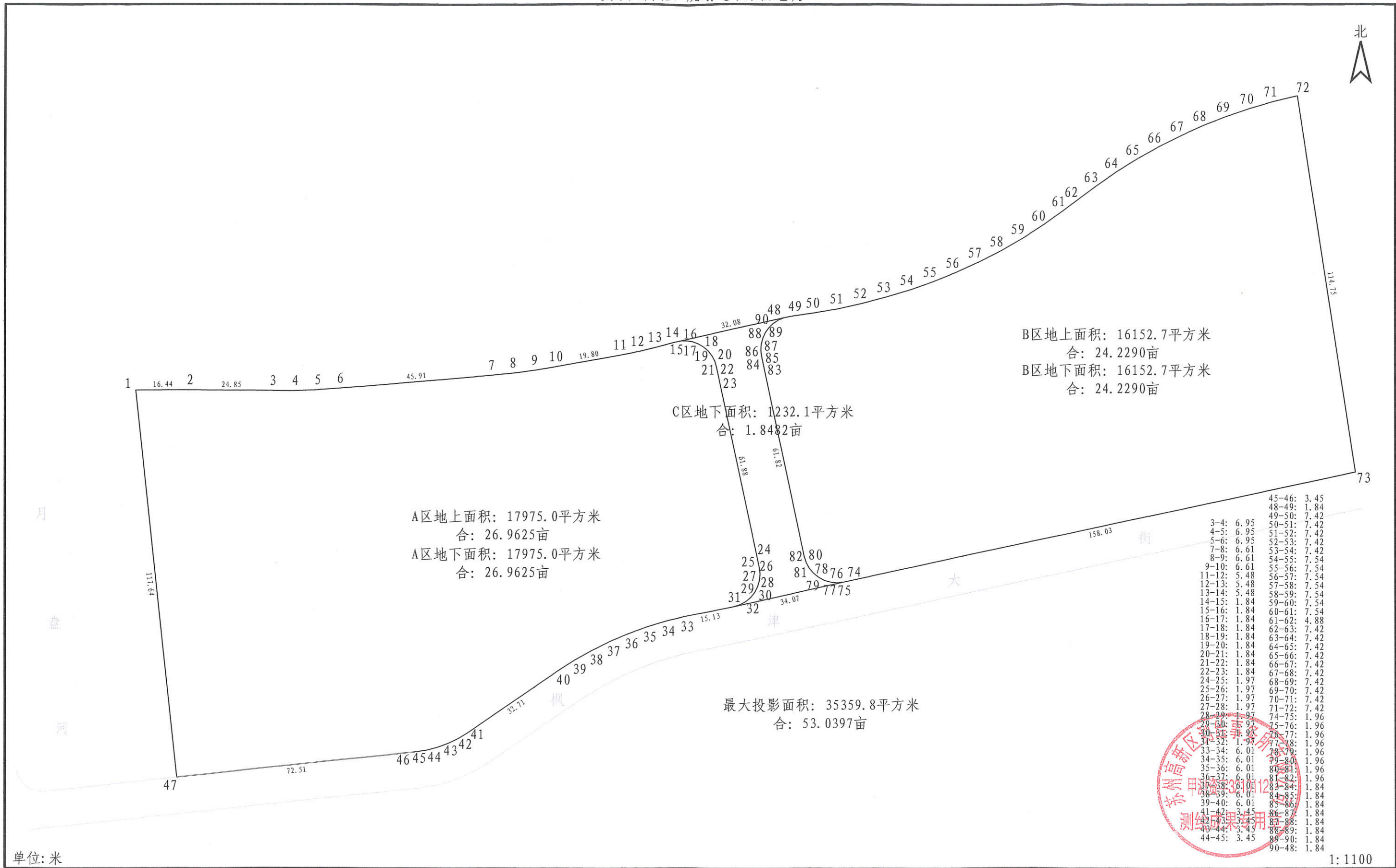


界桩示意图

枫津大街北、规划道路东西地块



A区地上面积: 17975.0平方米
合: 26.9625亩
A区地下面积: 17975.0平方米
合: 26.9625亩

C区地下面积: 1232.1平方米
合: 1.8482亩

B区地上面积: 16152.7平方米
合: 24.2290亩
B区地下面积: 16152.7平方米
合: 24.2290亩

最大投影面积: 35359.8平方米
合: 53.0397亩

| | | | |
|--------|------|--------|------|
| 3-4: | 6.95 | 45-46: | 3.45 |
| 4-5: | 6.95 | 48-49: | 1.84 |
| 5-6: | 6.95 | 49-50: | 7.42 |
| 7-8: | 6.61 | 50-51: | 7.42 |
| 8-9: | 6.61 | 51-52: | 7.42 |
| 9-10: | 6.61 | 52-53: | 7.42 |
| 11-12: | 5.48 | 53-54: | 7.42 |
| 12-13: | 5.48 | 54-55: | 7.54 |
| 13-14: | 5.48 | 55-56: | 7.54 |
| 14-15: | 1.84 | 56-57: | 7.54 |
| 15-16: | 1.84 | 57-58: | 7.54 |
| 16-17: | 1.84 | 58-59: | 7.54 |
| 17-18: | 1.84 | 59-60: | 7.54 |
| 18-19: | 1.84 | 60-61: | 7.54 |
| 19-20: | 1.84 | 61-62: | 4.88 |
| 20-21: | 1.84 | 62-63: | 7.42 |
| 21-22: | 1.84 | 63-64: | 7.42 |
| 22-23: | 1.84 | 64-65: | 7.42 |
| 24-25: | 1.97 | 65-66: | 7.42 |
| 25-26: | 1.97 | 66-67: | 7.42 |
| 26-27: | 1.97 | 67-68: | 7.42 |
| 27-28: | 1.97 | 68-69: | 7.42 |
| 28-29: | 1.97 | 69-70: | 7.42 |
| 29-30: | 1.97 | 70-71: | 7.42 |
| 30-31: | 1.97 | 71-72: | 7.42 |
| 31-32: | 1.97 | 72-73: | 1.96 |
| 33-34: | 6.01 | 73-74: | 1.96 |
| 34-35: | 6.01 | 74-75: | 1.96 |
| 35-36: | 6.01 | 75-76: | 1.96 |
| 36-37: | 6.01 | 76-77: | 1.96 |
| 37-38: | 6.01 | 77-78: | 1.96 |
| 38-39: | 6.01 | 78-79: | 1.96 |
| 39-40: | 6.01 | 79-80: | 1.96 |
| 40-41: | 3.45 | 80-81: | 1.96 |
| 41-42: | 3.45 | 81-82: | 1.84 |
| 42-43: | 3.45 | 82-83: | 1.84 |
| 43-44: | 3.45 | 83-84: | 1.84 |
| 44-45: | 3.45 | 84-85: | 1.84 |
| | | 85-86: | 1.84 |
| | | 86-87: | 1.84 |
| | | 87-88: | 1.84 |
| | | 88-89: | 1.84 |
| | | 89-90: | 1.84 |
| | | 90-48: | 1.84 |

单位: 米
绘图: 王斌伟 审核: 张浩 负责: 陈小明

1:1100
2022年7月5日